

Highlights from EHA

Novità dall'EHA >> [Mieloma multiplo]
(Paziente giovane)

Relatore: **M. CAVO**

27-28 ottobre 2008

Borgo S. Luigi – Monteriggioni (Siena)

MEL 200 mg/m² (MEL200) versus MEL 100 mg/m² (MEL100) in newly diagnosed myeloma patients: a prospective randomized phase III study

2

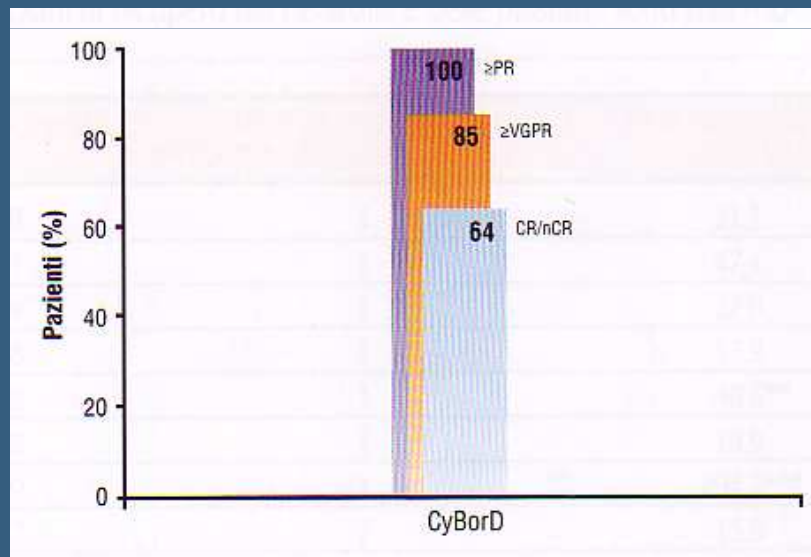
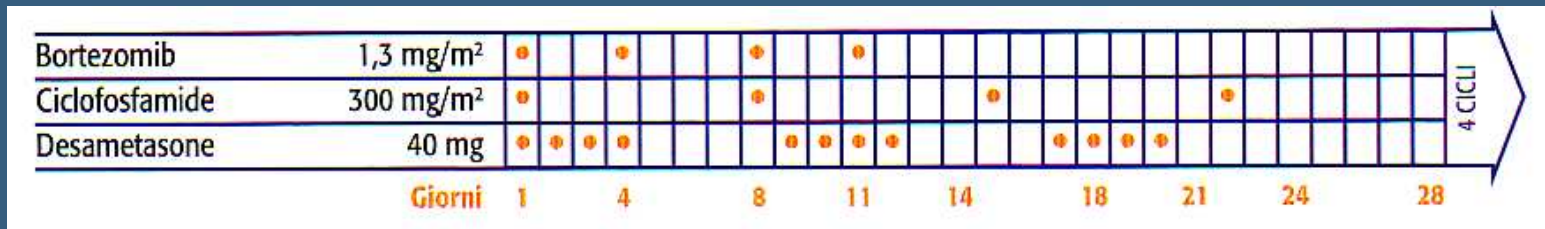
		VAD X 2 → CTX (4 g / m ²) X 2			
		R			
		MEL 200 X 2		MEL 100 X 2	
	N	149		N	149
RECEIVED (%)		64	N.S.		69
Δ 13 (%)		69	P = 0.02		45
CR (%)*		15	P = 0.07		8
VGPR (%)		37	P = 0.003		21
3-YR EFS (%)*		46	P = 0.03		26
3-YR OS (%)		81	P = 0.14		73
GRADE 3-4 INFECT*			SIMILAR		
TRM*			SIMILAR		

* Study end-points

Boccadoro M, Abstract 0915

Efficacy of induction with CyBorD in newly diagnosed multiple myeloma

3



N = 33 pts

grade 3 NEUTROPENIA= 20%

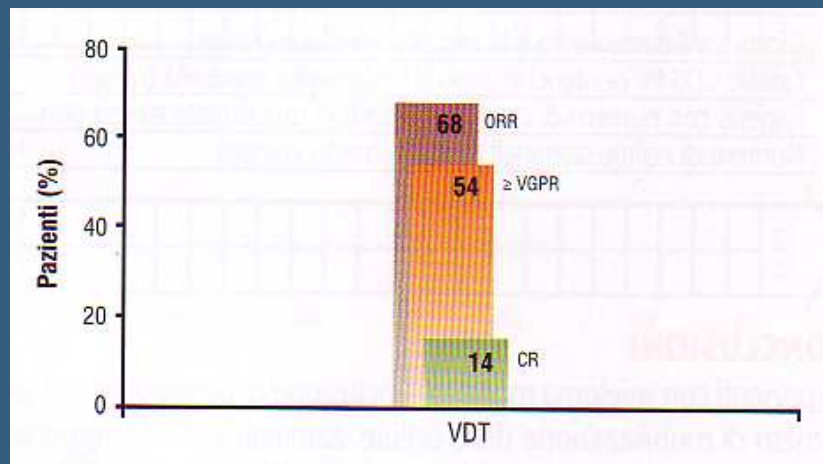
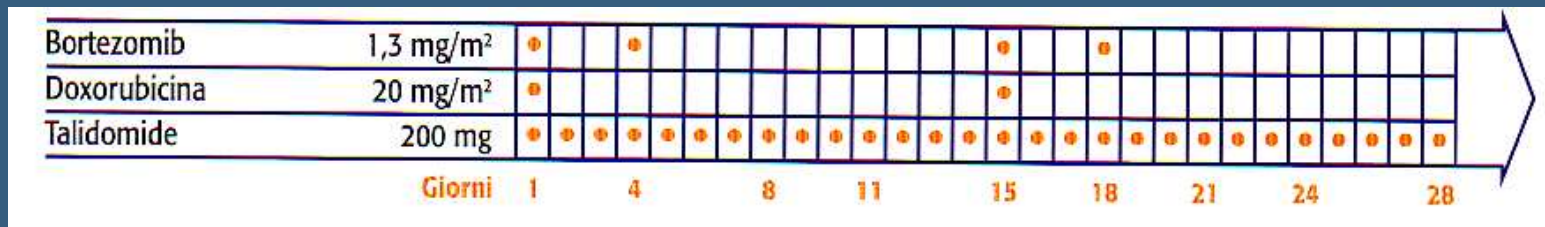
grade 3 PN = 5%

Reeder C.B., Abstract 0205

Bortezomib in combination with pegylated liposomal doxorubicin and thalidomide (VDT) for the treatment of previously untreated multiple myeloma

4

Median cycles = 5 (1-8)



N= 34 pts

grade 3-4 NEUTROPENIA= 21%

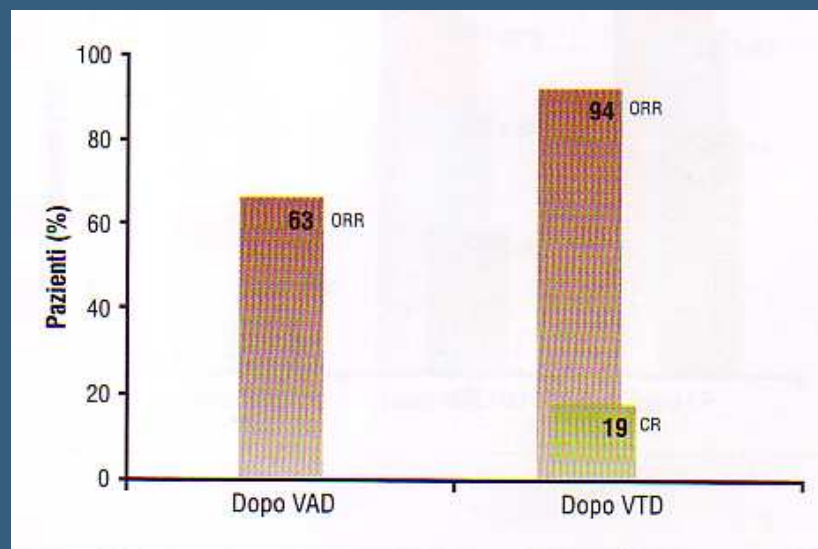
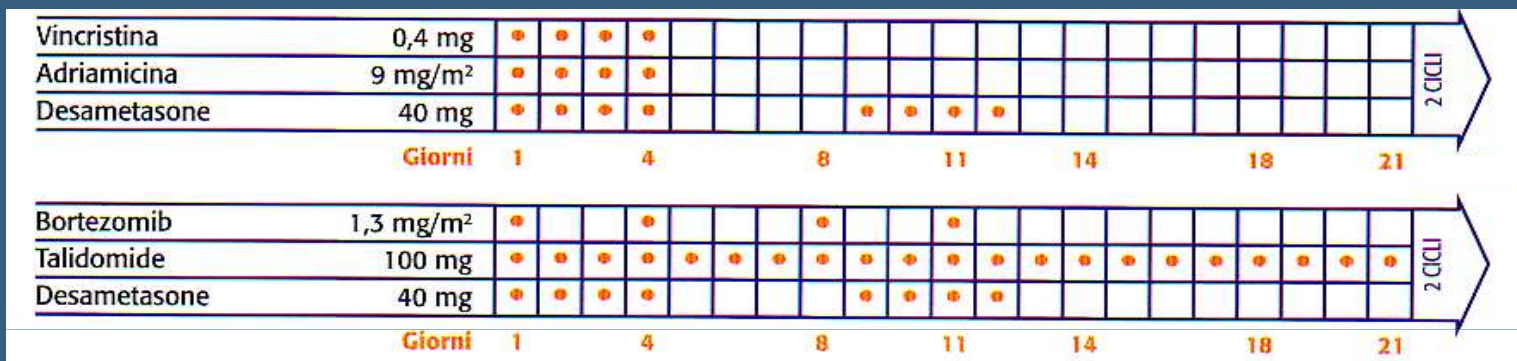
grade 3-4 INFECTIONS= 21%

grade 3-4 PN = 3%

Ailawadhi S, Abstract 0208

Sequential VAD and VTD induction followed by high-dose therapy with ASCT and maintenance treatment with bortezomib for newly diagnosed multiple myeloma: interim results of phase II trial

5



N = 60 pts

grade 2-3 PN = 9.6%

Yoon S-S, Abstract 0215

Non-myeloablative allografting for newly diagnosed myeloma: final results of a prospective phase II study by Gruppo Italiano Trapianto Midollo Osseo

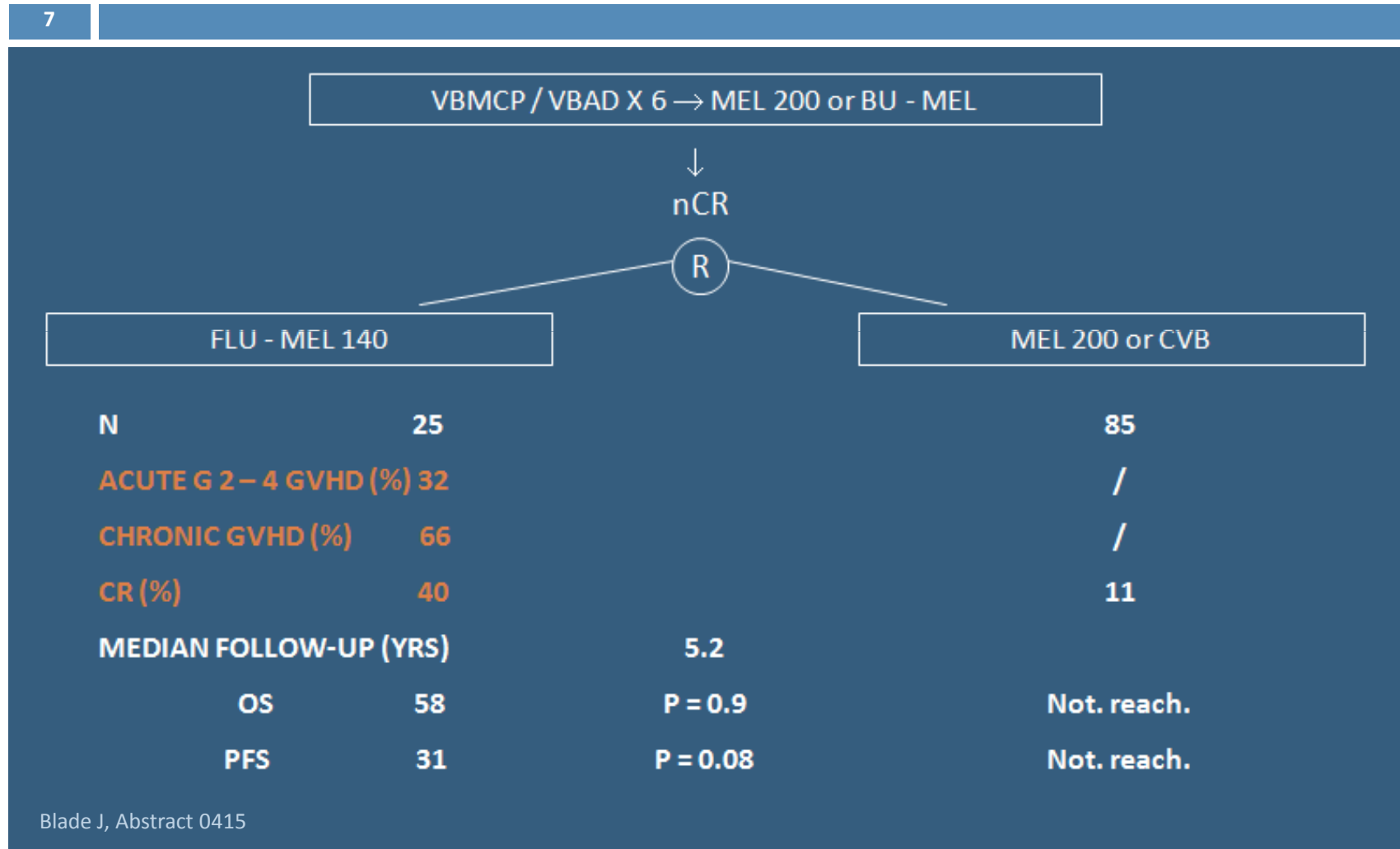
6

	VAD X 2 → CTX → MEL 200
	TBI (2 Gy) / CSA + MFN
N	104
COMPLETED (%)	92
MEDIAN YRS	54 (30 – 65)
ACUTE G 2-4 GVHD (%)	40 (G 4 = 4)
CHRONIC GVHD (%)	52
TRM (%)	14
≥ PR (%)	91
CR (%)	53
MEDIAN FOLLOW-UP (YRS)	5 (2.3 – 8.4)
MEDIAN EFS (mos)	37 (31 – 54)
PROGR / REL (%)	44
RELAPSE FROM CR (%)	26

Giaccone L, Abstract 0412

A prospective PETHEMA study of tandem autologous transplantation vs autograft followed by reduced-intensity conditioning allogeneic transplantation in newly diagnosed multiple myeloma.

7



Results of phase I/II trial of DEUTSCHE STUDIENGRUPPE multiple myeloma showing efficacy and safety of RAD

8

PHASE I / II REGIMEN

PHASE I

R 10 → 25 mg / d 1-21

A 4 → 9 mg / m² / 1-4

PHASE II

R 25 mg / d 1-21

A 9 mg / m² / 1-4

D 40 mg / d 1-4 , 17-20

G – CSF 6 mg / d 6

6 28-d cycles

RESULTS

N = 69

EVALUABLE = 61

Phase I = 20

Phase II = 41

2 – 3 prior Tx = 47%

Phase I = ORR : 60%

≥ nCR : 25%

Phase II = ORR : 85%

CR : 24%

VGPR : 59%

PR with t(4;14) and 17p del

Kuop S, Abstract 0637

Bortezomib, low dose intravenous melphalan and dexamethasone for patients with relapsed multiple myeloma

9

PHASE I / II REGIMEN

PHASE I

V 1.3 mg / m² / d 1, 4, 8, 11

M 2.5 → 10 mg / m² / d 2

PHASE II

V 1.3 mg / m² / d 1, 4, 8, 11

M 7.5 → mg / m² / d 2

D 20 mg before and after V (SD or PD)

Popat R, Abstract 0918

RESULTS

N = 53

PHASE I = 21

PHASE II = 32

Prior ASCT = 85%

Prior THAL = 64%

Overall ≥ PR = 69%

≥ VGPR = 29%

Overall phase II ≥ PR = 78%

≥ VGPR = 40%

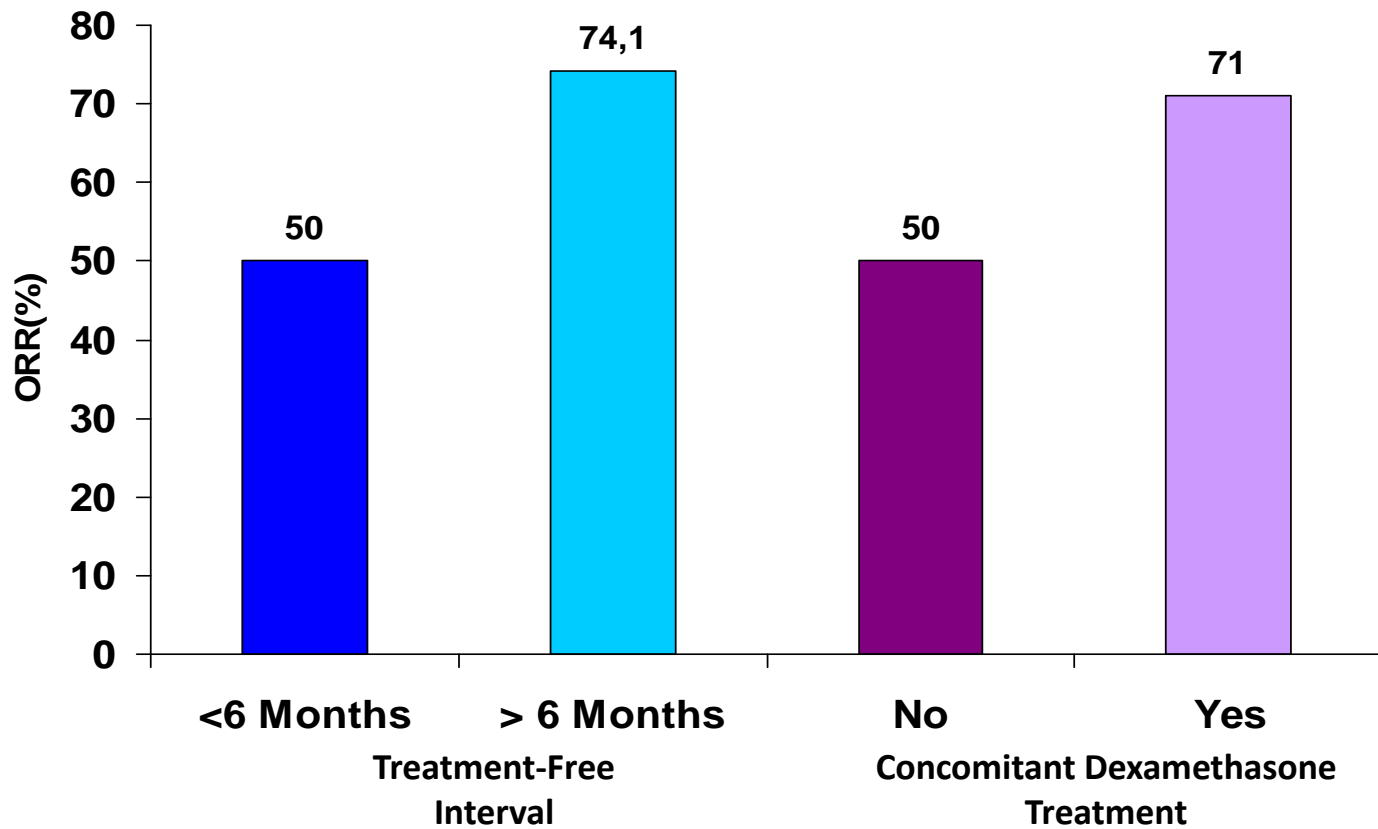
Median PFS = 12 mos

14 mos (≥ nCR)

10 mos (< nCR)

Response to bortezomib re-treatment is determined by duration of preceding treatment-free interval: results from a retrospective multicenter survey

10



Hrusovsky I, Abstract 0645